

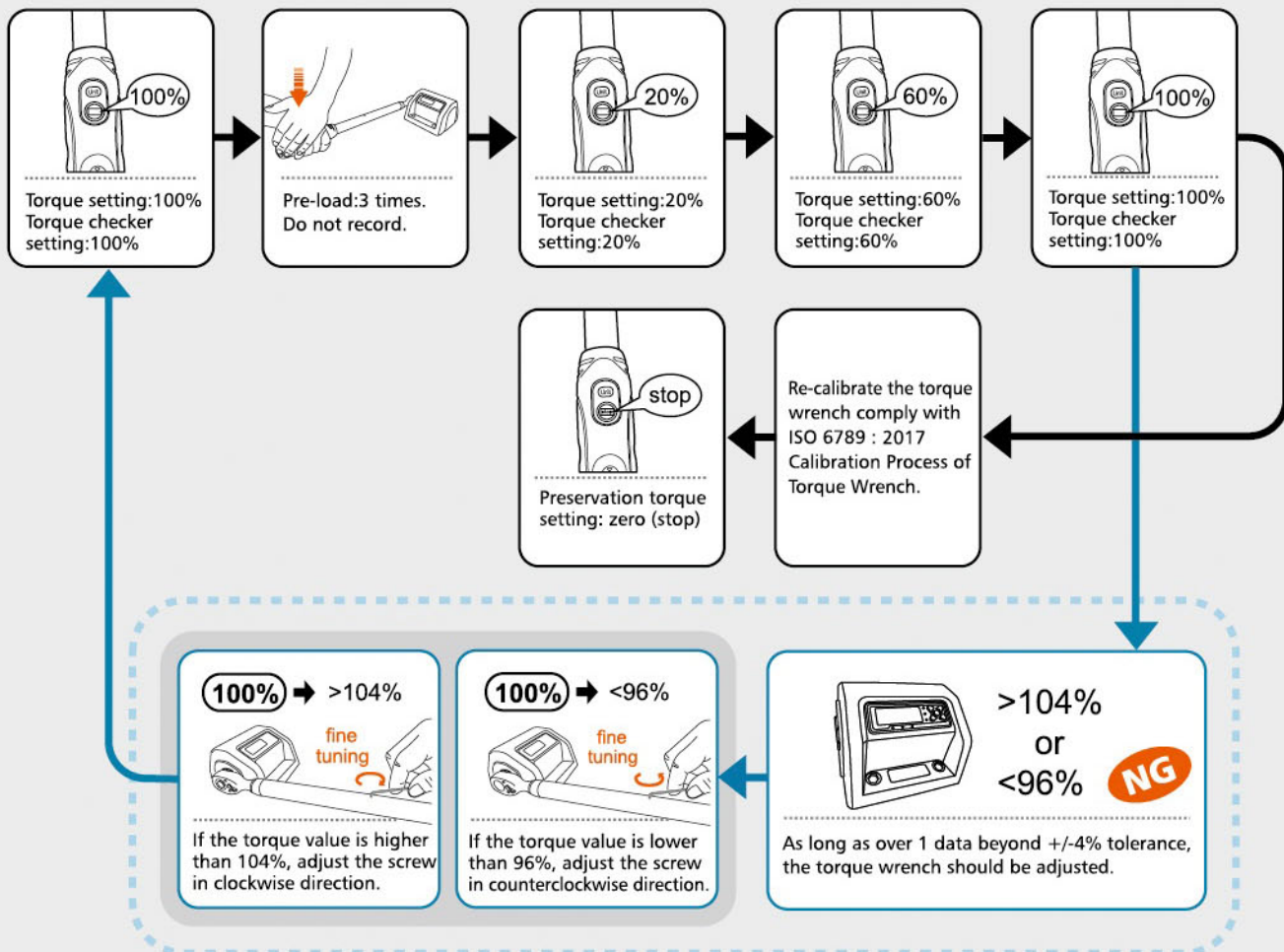
Screen Torque Wrench Calibration Manual

Subject: Wtools Screen Torque Wrench

Prepare: 1. Screen Torque Wrench X1

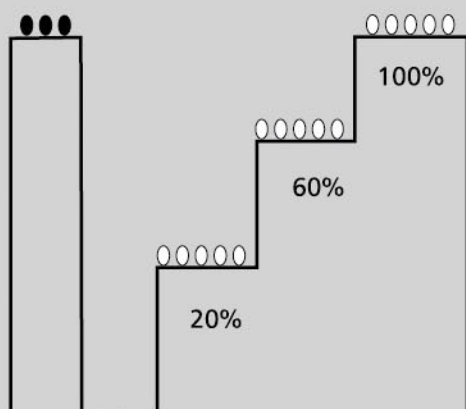
2. 2.5mm Allen Key X1

3. Torque Tester (Regard Wtools Torque Tester as the example)



Notice: If the torque data is not in the tolerance (+/- 4%) after adjusting; contact your dealer or send the torque wrench back to factory to do further adjustment.

ISO 6789-1 : 2017 Calibration Process of Torque Wrench



Note: Before recording data, there always should have pre-operation to warm up the structure.

- 0● are times of operating.
● means pre-operation, do not record.
○ means formal operation, record the data.
- Operating 3 times ● in the Max torque(100%).
- Loosen to the lowest torque.
- Set to 20% of the Max. torque, operate 5○.
- Set to 60% of the Max. torque, operate 5○.
- Set to 100% of the Max. torque, operate 5○.
- Loosen to the lowest torque.