

Applications

Make	Model	Year
Ford	Focus	2005-2011
	Galaxy	2006-2010
	Kuga	2009-2013
	Mondeo	2007-2010
	S-Max	2006-2010
Volvo	C30	2006-2013
	C70	2006-2013
	S40	2003-2012
	S60	2003-2016
	S80	2003-2012
	V40	2012-2015
	V50	2004-2012
	V70	2002-2012
	XC60	2014-2016
	XC70	2002-2007
	XC90	2002-2014

Engine Code

2.5	HYDA, HYDB, HUBA, B5254T10, B5254T11, B5254T12, B5254T14, B5254T2, B5254T3, B5254T4, B5254T5, B5254T6, B5254T7, B5254T8, B5254T9
-----	--

Our products are designed to be used correctly and with care for the purpose for which they are intended. No liability is accepted by Sonic for incorrect use of any of our products, and Sonic cannot be held responsible for any damage to personnel, property or equipment when using the tools. Incorrect use will also invalidate the warranty.

If applicable, the applications database and any instructional information provided has been designed to offer general guidance for a particular tool's use and while all attention is given to the accuracy of the data no project should be attempted without referring first to the manufacturer's technical documentation (workshop or instruction manual) or the use of a recognised authority such as Autodata.

It is our policy to continually improve our products and thus we reserve the right to alter specifications and components without prior notice. It is the responsibility of the user to ensure the suitability of the tools and information prior to their use.

ART NO. 829133

sonic
equipment

Instructions

Engine Service Kit Volvo/Ford - 2.5 Petrol



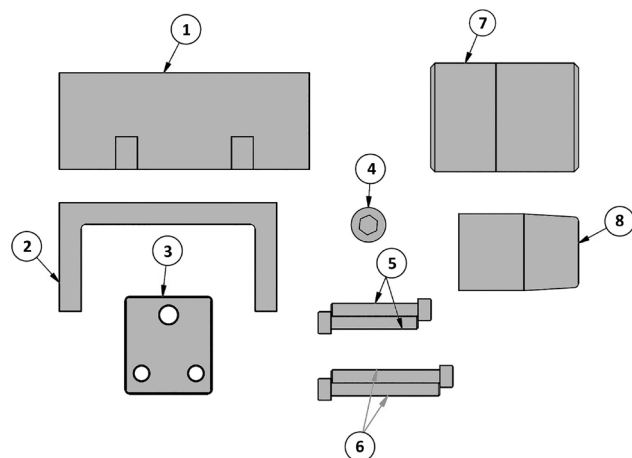
829133 - Engine Service Kit

Developed specifically for the 2.5 DOHC petrol engines used by Ford and Volvo.

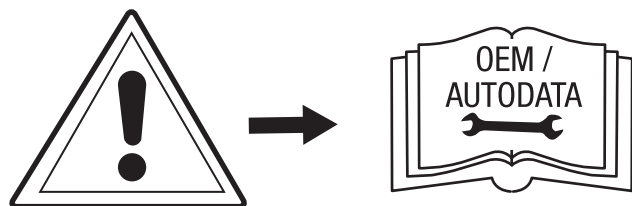
- The kit contains all of the components to allow the camshafts to be held in the correct position whilst setting the tappets and for replacement of the front crankshaft oil seal.

Components

Ref	Comp	OEM	Description
1	4880411	303-1183, 999 5765	Camshaft Holding Bracket - Base
2	4880410	303-1183	Camshaft Holding Bracket - Clamp
3	4880412	303-1183	Camshaft Holding Bracket - Connecting piece
4	4880349	303-1183	M10 x 15 screw (x1) to connect 1 to 3
5	4880351		M6 x 40 screw (x2) to connect 1 to 3
6	4880214		M7 x 50 screw (x2) to connect 1 to cylinder head
7	4880408	303-1180	Crankshaft Seal Fitting Drift
8	4880409	303-1180	Crankshaft Seal Fitting Guide



The following instructions are for guidance only. Please refer to OEM derived data such as the vehicles manufacturers own data or Autodata. The use of these engine timing tools is purely down to the user's discretion and Sonic cannot be held responsible for any damage caused whatsoever.

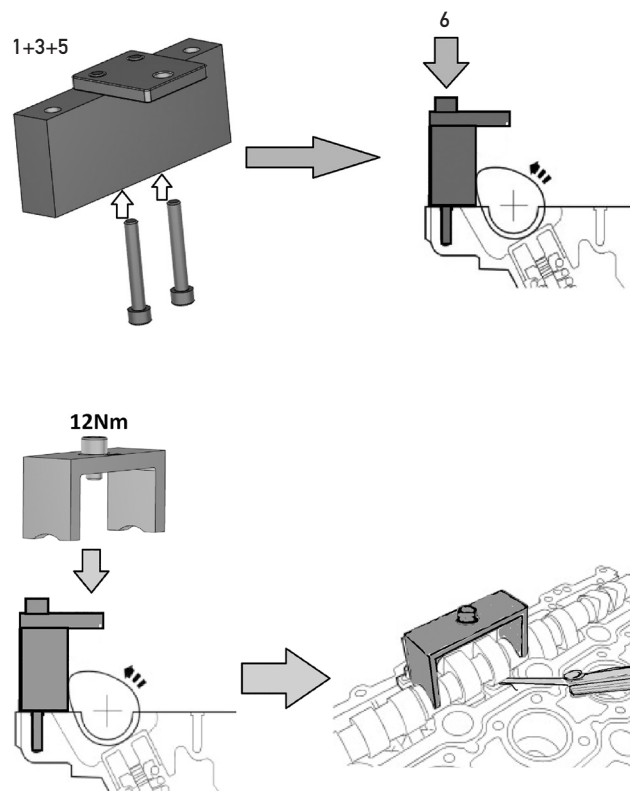


Instructions

Camshaft Holding Assembly (1, 2, 3, 4, 5, 6)

Used to hold down the camshafts whilst checking the valve clearances.

Assemble the Camshaft Holding tool as shown. Using appropriately sized feeler gauges check the valve clearance as shown.



Front Crankshaft Oil Seal Fitting Tools (7 + 8)

Place component seal guide (8) over the end of the crankshaft and lubricate with engine oil. Gently position the new seal onto the seal guide (8) and slide the seal squarely along the guide until it is fitted on the crankshaft and into the engine block.

