

Pro**Meister**



User Guide

Brake Bleeder Kit

Art. Nr: PT5115

Produced in Taiwan for
Bileko Car Parts AB
P.O. Box 542
S-645 25 Strängnäs, Sweden
Tel: +46 771 72 00 00
www.promeister.com

RVNR-01

Features

- Lightweight with less than 1kg for easy carry & operation
- Pneumatic extractor non-spark
- 1m silicon hose with universal rubber adapter which can fit most vehicle brake oil bleeder fitting
- Fixing valve & safety cup for automatic cut-off extracting

Safety Precautions



CAUTION



- Always read the instructions carefully before using the tool
- Do not use the unit to extract or store dangerous chemicals, poison, etc.
- Ensure the working area has adequate lighting
- Keep children and unauthorized persons away from the working area
- Keep working area clean and tidy, dry and free from unrelated materials
- DO NOT allow untrained persons to use this tool kit
- Always wear eye protection that meets OSHA and ANSI Z87.1 standards
- Always wear gloves when working with the tool
- Always wear ear protection
- Disposal: Customers should follow local regulations or entrust local organization to handle used/wasted fluids

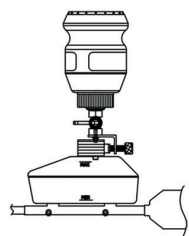
Instructions



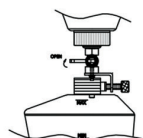
Step 1
Fill the tank with brake fluid specified by the vehicle manufacturer handbook.
(max 1,000cc)



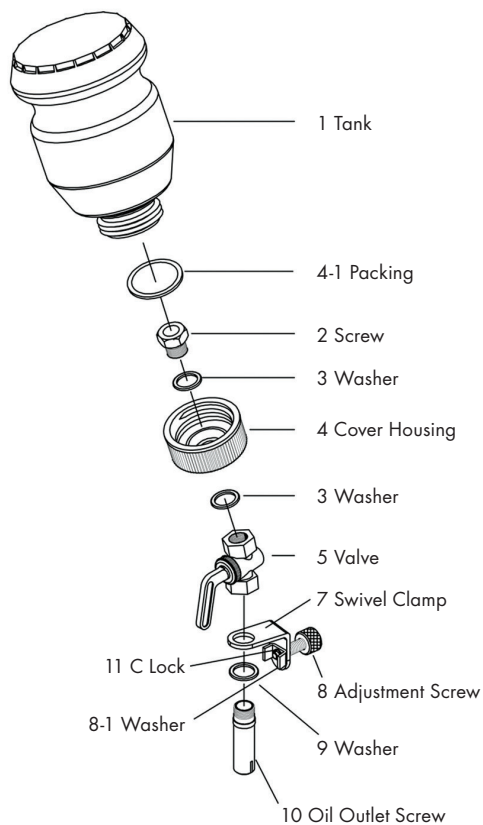
Step 2
Screw the cover housing back on. Ensure the valve is tightly closed.



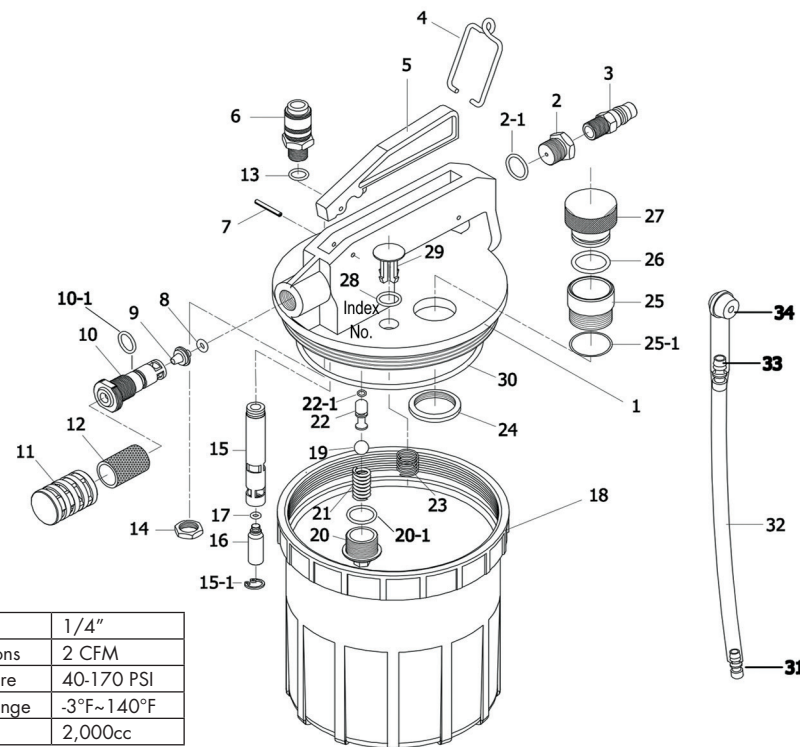
Step 3
Put the tank on the master cylinder reservoir.



Step 4
Turn the valve to ensure it is ready for filling.



Specifications



Air Inlet	1/4"
Average Air Cons	2 CFM
Working Pressure	40-170 PSI
Temperature Range	-3°F~140°F
Max. Capacity	2,000cc

Index No.	Description	Remark
1	Cover Housing	
2	Inlet Nut	
2-1	O Ring	
3	Air Inlet Coupler	
4	Fixing Ring	
5	Trigger	
6	Fluid Inlet Coupler	
7	Pin	
8	O Ring	
9	Vacuum Valve	
10	Vacuum Body	
10-1	O Ring	
11	Noise-Reduction Cover	
12	Noise-Reduction Net	
13	O Ring	
14	Lock Nut	
15	Safety Valve	
15-1	C Locker	
16	Safety Cup	
17	O Ring	

Index No.	Description	Remark
18	Tank	
19	Steel Ball	
20	Locking Screw	
20-1	O Ring	
21	Spring	
22	Valve	
22-1	O Ring	
23	Spring	
24	Lock Nut	
25	Oil Outlet Housing	
25-1	O Ring	
26	O Ring	
27	Oil Outlet Cover	
28	O Ring	
29	Safety Valve	
30	O Ring	
31	Coupler	
32	Silicon Hose	
33	Adapter	
34	Brake Coupler	

The type and specifications may be changed with or without notice.