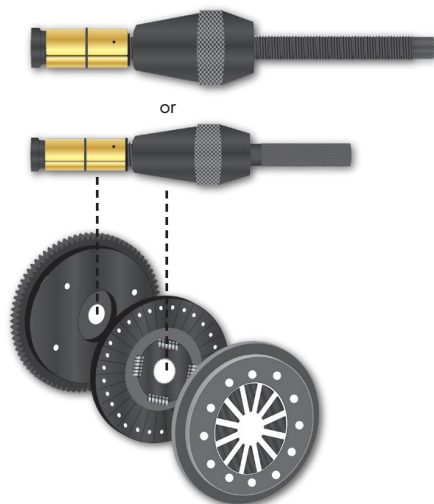


## Instructions

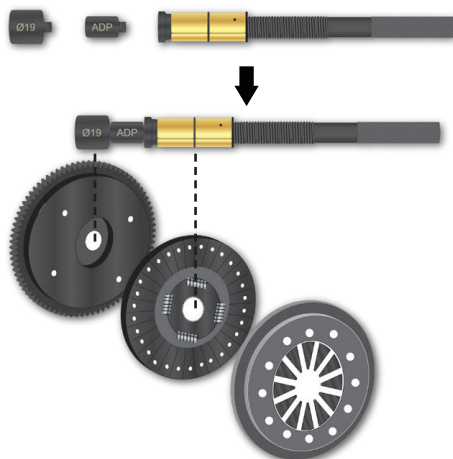
### Use of Cone Adapters

- When no suitable pilot bearing adapters or mandrel size can be found



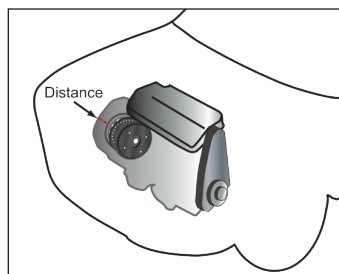
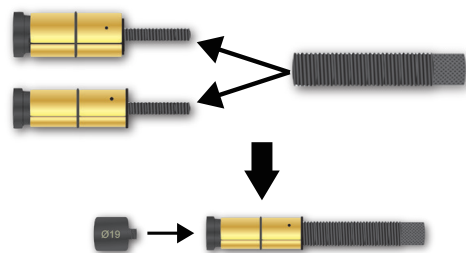
### Use of Extension Adapter

- When the distance between the pilot bearing and clutch disc is too far



### Use of the Short Spindle

- Some smaller vehicles have very limited space for clutch alignment. Short spindle can be very helpful in such circumstances.



Pro**Meister**



# User Guide

## Clutch Alignment Set (15pcs)

Art. Nr: PT5312

Produced in Taiwan for Bileko

**Bileko**

P.O. Box 542

S-645 25 Strängnäs, Sweden

Tel: +46 771 72 00 00

[www.promeister.com](http://www.promeister.com)

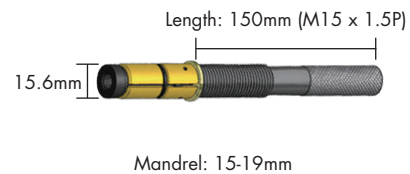
RVNR-01

## Features

- Universal application.
- Available for passengers cars and small trucks (below 3.500 cc).
- Available for manual transmission types:
  - Nearly all vehicles with single disc
  - Some vehicles with double disc
- Not suitable for DSG (double clutch) system

## Specifications

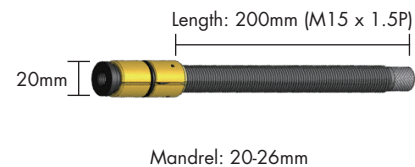
### Medium Spindle with Mandrel



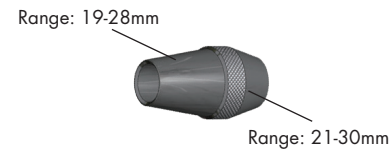
### Pilot Bearing Adapters



### Medium Spindle with Mandrel



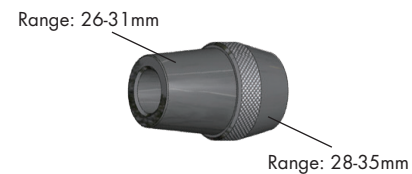
### Small Cone Adapter



### Short Spindle



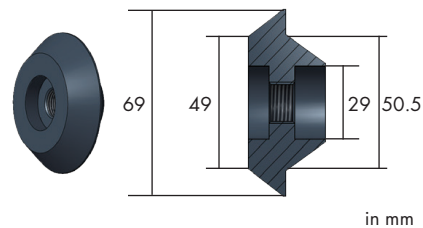
### Big Cone Adapter



### Extension Adapter



### Clutch Cover Adapter



## Instructions



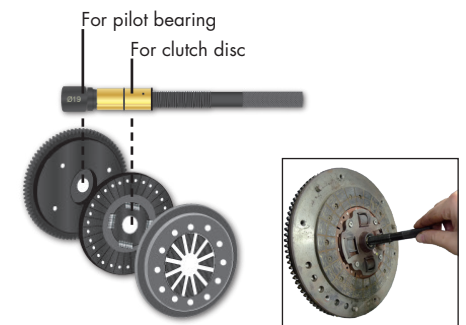
**CAUTION**



- Always read the instructions carefully before using the tool
- This tool kit is for automotive manual transmission **ONLY**
- Ensure the working area has adequate lighting
- Keep children and unauthorized persons away from the working area
- Keep working area clean and tidy, dry and free from unrelated materials
- DO NOT allow untrained persons to use this tool kit
- Always wear eye protection that meets OSHA and ANSI Z87.1 standards
- Always wear gloves when working with the tool
- Always wear ear protection
- Disposal: Customers should follow local regulations or entrust local organisation to handle used/wasted parts

### A. Clutch with a Pilot Bearing

1. Choose a suitable adapter to fit to the pilot bearing, and connect the adapter to the spindle and mandrel.
2. Check size and adjust the mandrel size accordingly.
3. Install the tool in center hole for the alignment



### B. Clutch without a Pilot Bearing

1. Check clutch size and adjust the mandrel size accordingly.
2. Install the tool onto the clutch.
3. Screw the clutch cover adapter to the end to help align clutch cover and disc

