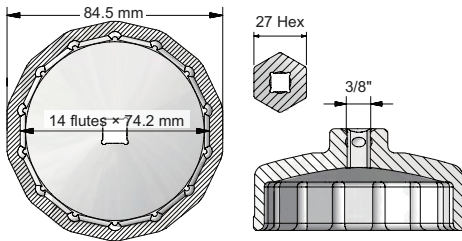


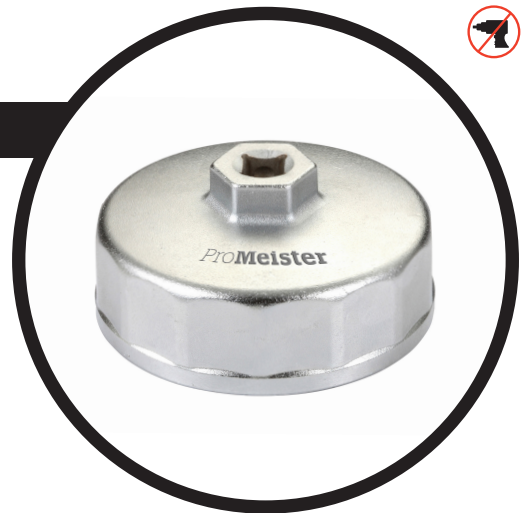
Oil Filter Wrench for Ford & Mazda

Art. Nr: PT55063

Contents



Dimension	14 flutes x 74.2mm
Height	42mm
Square Drive	3/8"DR
Material	Aluminum
Surface Finish	Chrome
Torque	25 ± 5 Nm



Instructions

**CAUTION**

- Always read the instructions carefully before using the tool
- DO NOT use an air/impact wrench to work with the tool
- Ensure the working area has adequate lighting
- Keep children and unauthorized persons away from the working area
- Keep working area clean and tidy, dry and free from unrelated materials
- DO NOT allow untrained persons to use this tool kit
- Always wear eye protection that meets OSHA and ANSI Z87.1 standards
- Always wear gloves when working with the tool
- Always wear ear protection
- Disposal: Customers should follow local regulations to handle used/wasted parts

Removing an old filter cartridge

Use a 27mm hex socket to connect a ratchet wrench and oil filter wrench, and turn counterclockwise for removal.

Installing a new filter cartridge

Use a 3/8"DR ratchet wrench and connect to oil filter wrench for installation. Apply some oil on oil filter cover rim before installation.



Applications

Make	Model	Year
Ford	Galaxy	2006-2015
Ford	Mondeo	2000-2015
Ford	Mondeo Turnier	2007-2015
Ford	S-Max	2006-2014
Mazda	6 GG Hatchback	2002-2007
Mazda	6 GY Estate	2002-2007