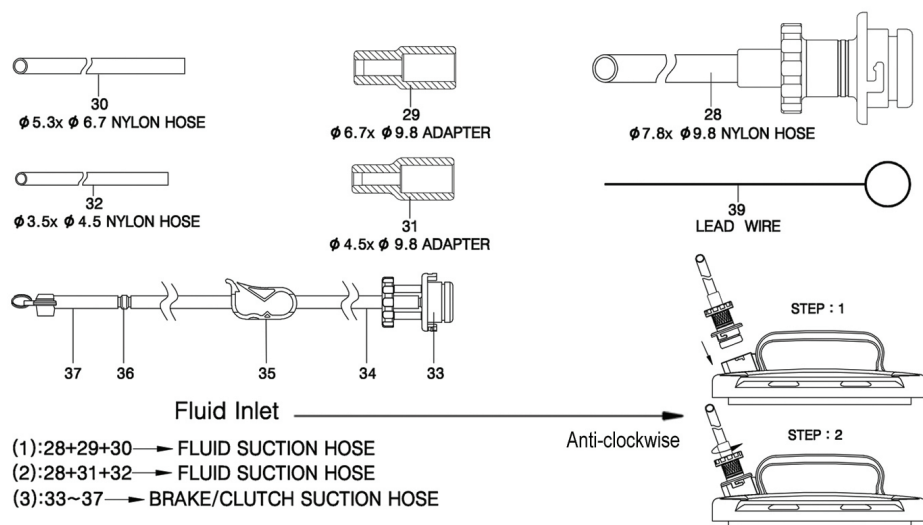


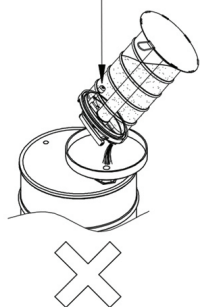
## Instructions

### HOW TO USE THE HOSE



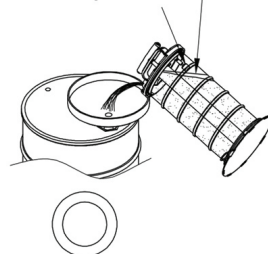
### ⚠ IMPORTANT

Fluid should not be leaking from the safety Valve

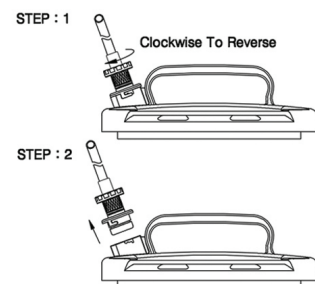


Draining Fluid beyond the safety line

Safety valve set



### FLUID DRAIN



Pro**Meister**



# User Guide

Produced in Taiwan for  
**Bileko Car Parts AB**  
 P.O. Box 542  
 S-645 25 Strängnäs, Sweden  
 Tel: +46 771 72 00 00  
[www.promeister.com](http://www.promeister.com)

## Pneumatic / Manual Operation Fluid Extractor

Art. Nr: PT5522

RVNR-01

## Features

- Three air outlet with check valve design for a quick & easy air extraction.
- Easy to operate; suitable for engine oil, gear oil, brake fluid, water, etc.
- Provided with new design decompression valve for easy an easy release of negative pressure.
- Fixing valve & safety cup for automatic cut-off extracting.

## Safety Precautions

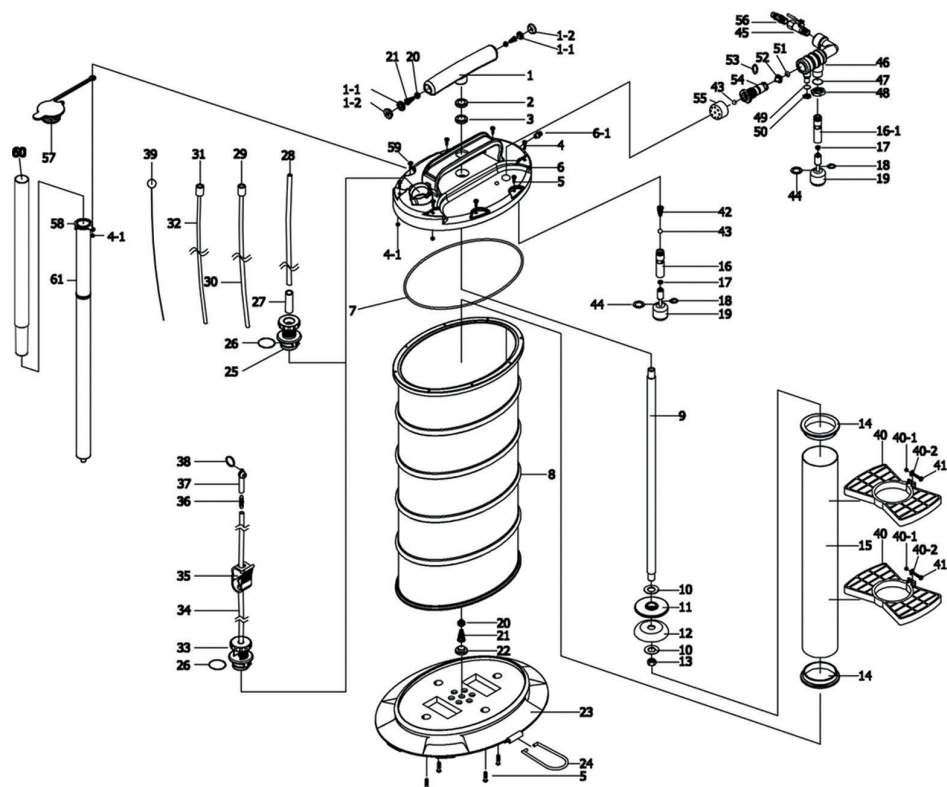


**CAUTION**



- Always read the instructions carefully before using the tool
- Do not use the unit to extract or store dangerous chemicals, poison, etc.
- Ensure the working area has adequate lighting
- Keep children and unauthorized person away from the working area
- Keep working area clean and tidy, dry and free from unrelated materials
- DO NOT allow untrained persons to use this tool kit
- Always wear eye protection that meets OSHA and ANSI Z87.1 standards
- Always wear gloves when working with the tool
- Always wear ear protection
- Disposal: Customers should follow local regulations or entrust local organization to handle used/wasted fluids

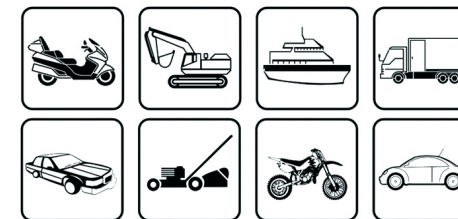
## Specifications



## Specifications

Air Inlet	1/4"
Average Air Cons	2 CFM
Working Pressure	70-170 PSI
Temperature Range	1°C~95°C
Max. Capacity	9,500cc

Index No.	Description	Remark
1	Handle	
1-1	Check Valve Body	2 Pcs
1-2	Noise-Reduction Cover	2 Pcs
2	Washer	
3	Oil Seal	
4	Screw	2 Pcs
4-1	Nut	
5	Screw	4 Pcs
6	Cover Housing	5 Pcs
6-1	Decompression Valve	7 Pcs
7	O Ring	
8	Tank	
9	Piston Tube	
10	Washer	2 Pcs
11	Plastics Washer	
12	Piston	
13	Screw	
14	Packing	
15	Aluminum Tube	
16	Safety Valve	
16-1	Safety Valve	
17	Packing	2 Pcs
18	C Locker	2 Pcs
19	Safety Buoy	2 Pcs
20	Packing	3 Pcs
21	Spring	3 Pcs
22	Check Valve Body	
23	Tank Stand	
24	Footboard	
25	Adapter	
26	O Ring	2 Pcs
27	Oil Hose	
28	Nylon Hose	
29	Adapter	



Index No.	Description	Remark
30	Nylon Hose	
31	Adapter	
32	Nylon Hose	
33	Adapter	
34	Silicon Hose	
35	One Touch Controller	
36	Adapter	
37	Brake Coupler	
38	Ring	
39	Leader Wire	
40	Prop	2 Pcs
40-1	Nut	2 Pcs
40-2	Washer	4 Pcs
41	Screw	2 Pcs
42	Spring	
43	Check Ball	2 Pcs
44	Washer	2 Pcs
45	Valve	
46	Vacuum Stand	
47	Packing	
48	Nut	
49	Packing	
50	Nut	
51	O Ring	
52	Vacuum Valve	
53	O Ring	
54	Vacuum Body	
55	Noise-Reduction Nut	
56	Coupler	
57	Dust Cover	
58	Tube Stand	
59	Screw	
60	Extension Tube	
61	Tube	

The type and specifications may be changed with or without notice.