

EC Declaration of Conformity

We, **Bileko Car Parts AB**
P.O. Box 542,
S-645 25 Strängnäs,
Sweden

Herewith declare that the following machine complies with the appropriate basic safety and health requirements of the EC Directive based on its design and type, as brought into circulation by us.

In case of alteration of the machine, not agreed upon by us, this declaration will lose its validity.

Description: Oil Drainer with 1/4" Quick Plug
Type: Art nr: PT5228
Applicable EC Directives: EC Machinery Safety Directives (2006/42/EC)
Applicable Harmonized Standards: ISO 12100 (Risk Assessment & Risk Reduction)
ISO 11148-6 (Safety Requirements)
ISO 15744 (Noise Level)

Date / Authorized Signature:

2019-11-29



Title of Signatory:

Henrik Pettersson
Purchasing & Category Manager



Pro**Meister**



User Guide

Oil Drainer with 1/4" Quick Plug

⚠ CAUTION

WARNING!

Read carefully and understand all INSTRUCTIONS before operating. Failure to follow the safety rules and other basic safety precautions may result in serious personal injury. Save these instructions in a safe place and on hand so that they can be read when required. Keep these instructions to assist in future servicing.

SAFETY PRECAUTIONS

General Safety Rules

WARNING: Read and understand all instructions.

WARNING: The warnings, cautions, and instructions discussed in this instruction manual cannot cover all possible conditions or situations that could occur. It must be understood by the operator that common sense and caution are factors which cannot be built into this product, but must be supplied by the operator.

WARNING!

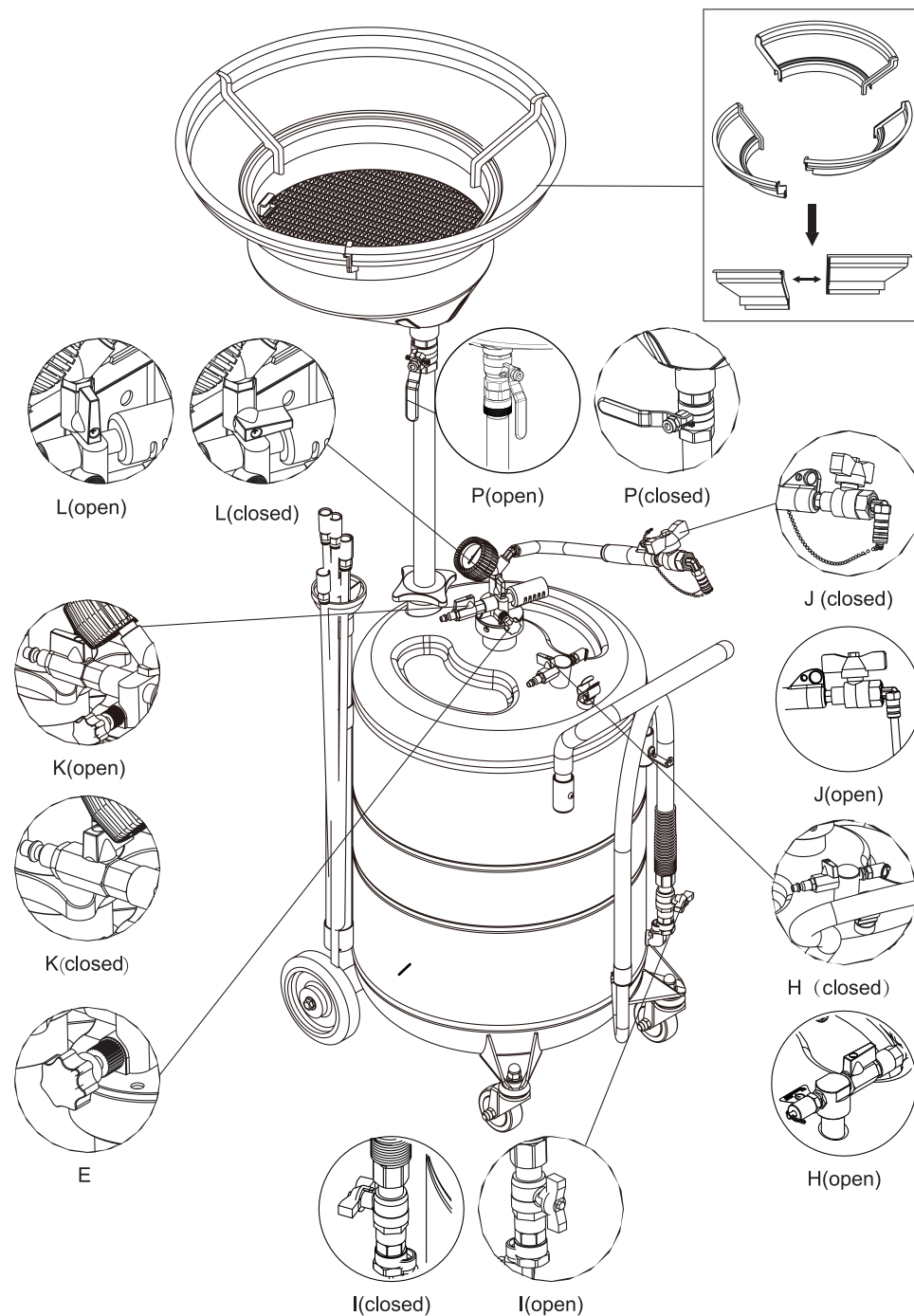
- Do not extract caustic or flammable products
- Do not expose the reservoir to any source of heat
- While extracting high temperature oils, keep hands and face protected
- Only use the device for the purpose for which it has been designed
- Do not modify any component of the equipment
- Only use original spare parts
- Our technical office is at your full disposal for any information you may need

Product Specifications

Art. No:	PT5528
Air Inlet:	1/4" Quick Plug
Extension Funnel:	Yes
Capacity:	100L/26.4Gal

- Air pressure for vacuum: 7~8bar / 100~115psi
- Max draining pressure: 1bar / 14.5psi
- Suction speed: (oil temperature <90°C, suction tube diameter $\Phi 6\text{mm}$): 2lpm / 0.5gpm
- Suction tube length: 2000mm / 78.7"
- Draining hose length: 1600mm/63"
- Collection bowl capacity: 18l / 4.8gal
- Extension Funnel diameter: 606mm / 23.8"

Product Assembly



Product Assembly

Fig 1: Assemble the handle(B) and the air inlet fitting, turn off the ball valve(H).

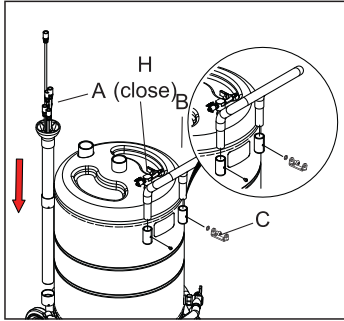


Fig 3: Insert the tube(N) into the reservoir, then turn the handwheel(O) clockwise direction and tighten.

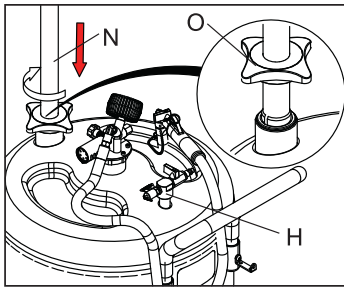


Fig 2: Assemble the vacuum gauge(D) and turn off the ball valve(J).

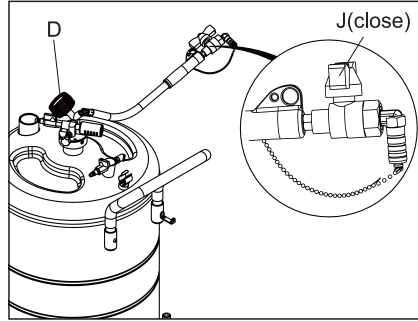
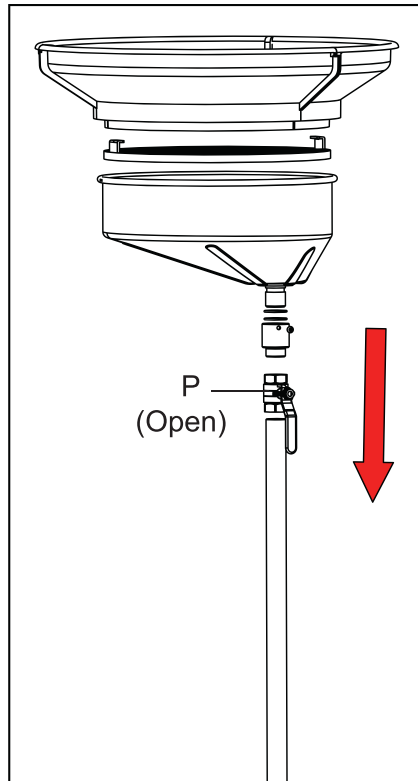


Fig 4: Assemble the supporting tube, ball valve (P), oil collecting bowl, filtrating plank and extension funnel orderly.



Product Operation

1. SUCKING

Fig 5: Close all the valves (K, P, J, H, I, L). Turn on the handwheel (E) anticlockwise direction and turn on the valve(L).

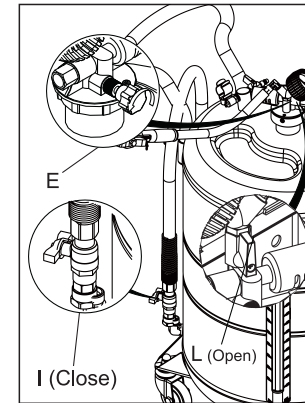


Fig 6: Connect the air supply, and make the vacuum gauge(F) index reach the green area.

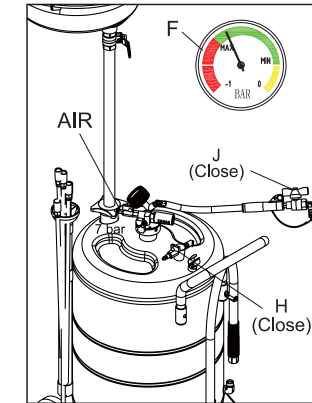
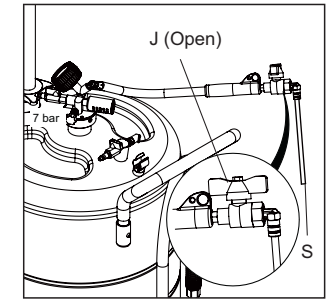


Fig 7: Connect the probe (S), then put it into the car engine, turn on the ball valve(J) for sucking oil.



2. COLLECTING

Fig 8: Close all the valves (K, P, J, H, I, L). Turn on the ball valve(P) and the valve(H).

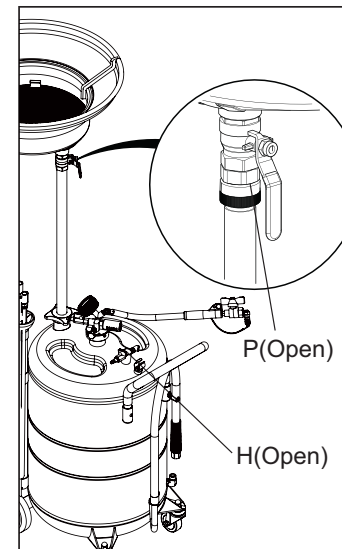
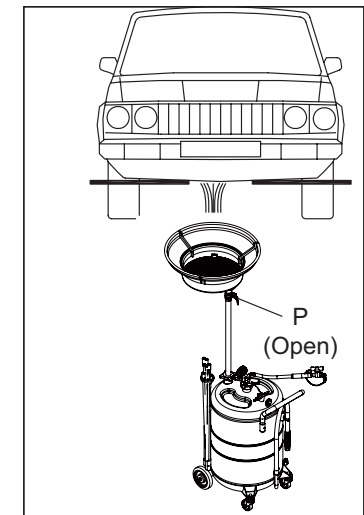


Fig 9: Place the oil drainer under the car to collect the waste oil. Turn on the ball valve(P).



Product Operation

3. DRAINING

Fig 10: Close all the valves (K, P, J, H, I, L).

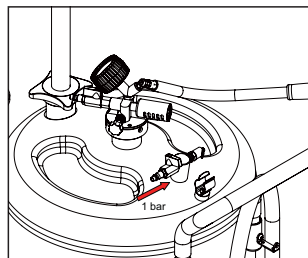


Fig 11: Close the handwheel(E) clockwise direction, put the spout(M) into the waste oil tank, then open the valve(I).

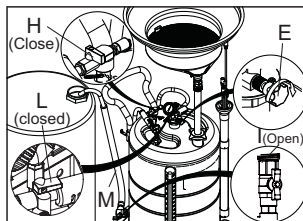
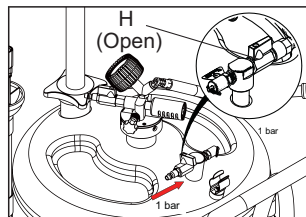


Fig 12: Connect the air supply, and open the valve(H) for draining.



Troubleshooting

Problem	Cause	Solution
Turn on the air source, the vacuum gauge index no move	Damage or jam on the vacuum gauge	Change the vacuum gauge
The index on vacuum gauge can't reach the green area	1. Air supply pressure is too low 2. Air flow is not enough	1. Increase the air supply pressure 2. Enlarge the air inlet diameter, shorten the hose length
The vacuum gauge index reaches the green area, but oil still can't be suction	1. Oil temperature is too low 2. There is jam in valve of the suction hose 3. There is jam inside the suction hose or suction fitting	1. Increase the oil temperature (eg. start the engine etc.) 2. Clean up the valve 3. Clean or change the hose or suction fitting
The vacuum gauge showing the leakage and can't suction the oil	1. O-ring of the suction fitting is broken 2. The bottom of the suction hose is higher than the oil level	1. Change the O-ring immediately 2. Keep the suction hose straight and ensure the hose touch with the oil

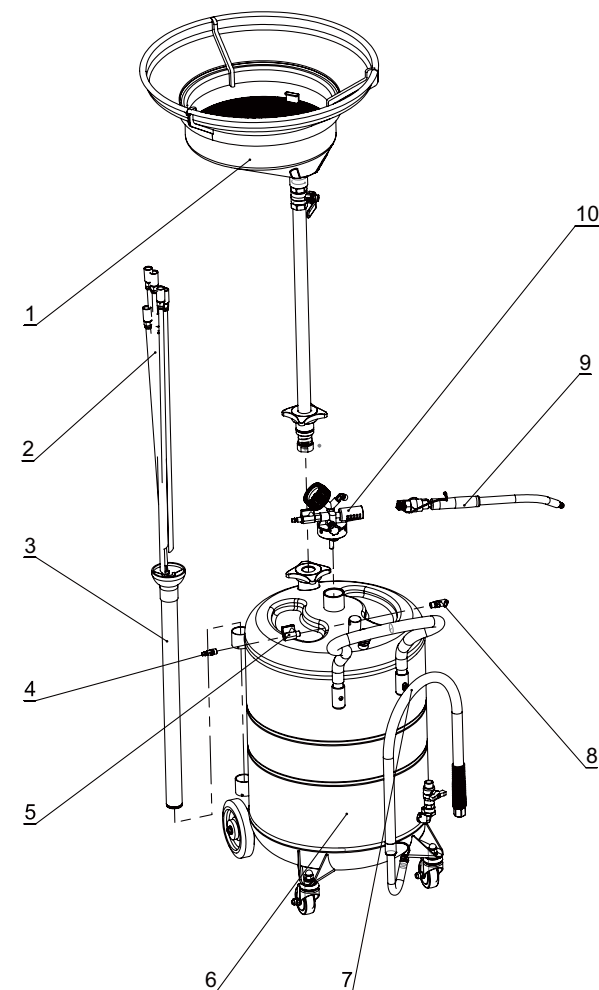
CAUTION

- Never fill the reservoir over the maximum level indicated by the gauge that is located on the side of the reservoir.
- Don't exceed maximum pressure 1bar/14.5psi for draining.
- Air pressure for vacuum is maximum 8bar/115psi.
- Open the bottom nut of the reservoir termly and clean out any dirty to avoid jam.

LIMITED WARRANTY

- The manufacturer warranties this product against defects in material and craftsmanship, for a period of one year from date of purchase, but not including wearing parts.
- Manufacturer's liability is limited to replacement or repair of defective material within the warranty period.
- The warranty does not cover damage caused by accident, misuse or faulty installation.
- The product must be installed and maintained in compliance with the instructions.

Exploded & Part List



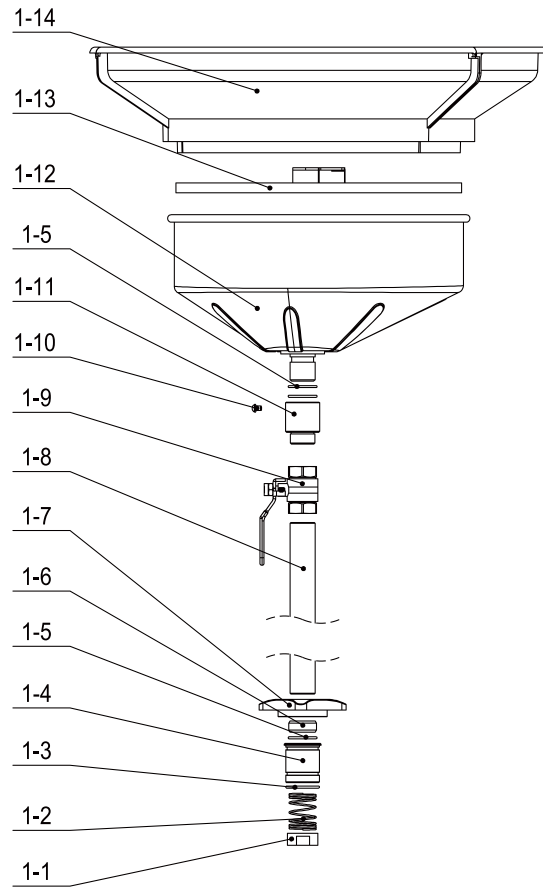
Part No.	Description	Qty
1	Oil collecting bowl assembly	1
*2	Probe kit	1
3	Probes container	1
*4	Quick plug	1
*5	Bell valve	1

Part No.	Description	Qty
6	Reservoir	1
*7	Discharging hose assembly	1
*8	Safety valve	1
*9	Suction hose assembly	1
10	Vacuum assembly	1

#: Optional accessories

*: Wearing parts

Oil Collecting Bowl Assembly & Part List



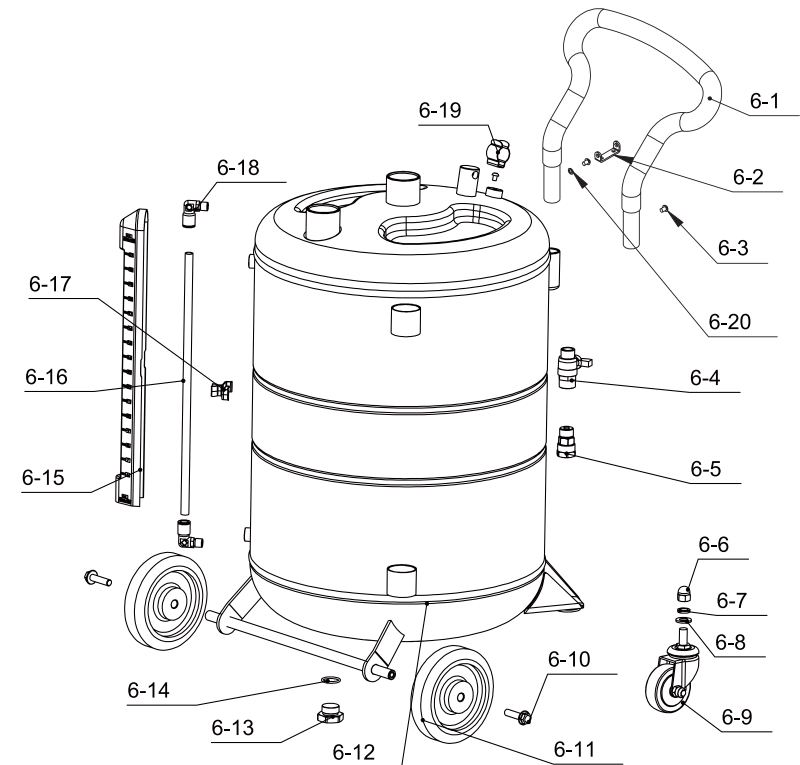
Part No.	Description	Qty
1-1	Check nut	1
1-2	Compression Spring	1
*1-3	O-ring	2
1-4	Sealing bush	1
*1-5	O-ring	4
1-6	Expansion cover	1
1-7	Handwheel	1

Part No.	Description	Qty
1-8	Supporting tube	1
*1-9	Ball valve	1
1-10	Nut	1
1-11	Retainer sleeve	1
1-12	Oil collecting bowl	1
1-13	Filtrating plank	1
#1-14	Extension funnel	1

#: Optional accessories

*: Wearing parts

Reservoir & Part List



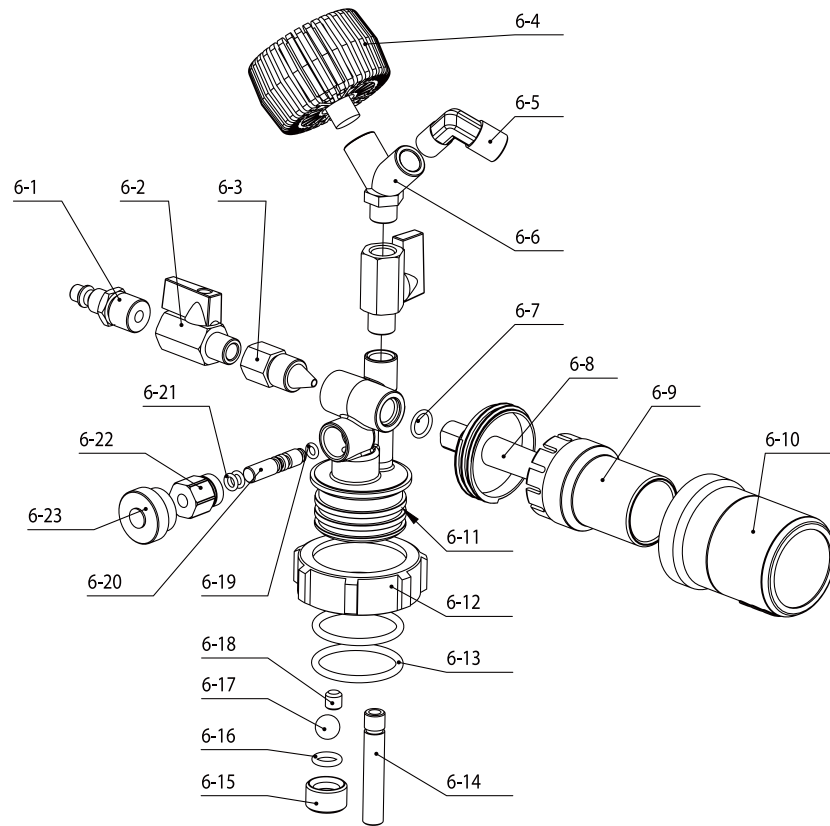
Part No.	Description	Qty
6-1	Handle	1
6-2	U-type hook	1
6-3	Screw	3
*6-4	Butterfly valve	1
*6-5	Swivel fitting	1
*6-6	Nuts	2
*6-7	Spring washer	2
6-8	Gasket	2
*6-9	Caster	2
6-10	Bolts	2

Part No.	Description	Qty
*6-11	Wheel	2
6-12	Reservoir assembly	1
6-13	Bolt	1
6-14	O-ring	1
6-15	Scale cover	1
6-16	Scale tube	1
6-17	Bushing	1
6-18	90° connector	2
6-19	Clip	1
6-20	Gasket	1

#: Optional accessories

*: Wearing parts

Vacuum Assembly & Part List



Part No.	Description	Qty
*6-1	Quick plug	1
*6-2	Ball valve	2
6-3	Muzzle	1
6-4	Vacuum Meter	1
6-5	Elbow	1
6-6	Y-shape adapter	1
*6-7	O-ring	1
6-8	Muffler shaft	1
6-9	Middle sleeve	1
6-10	Cover	1
6-11	Seat	1
6-12	Nut	1

Part No.	Description	Qty
*6-13	O-ring	2
6-14	Inlet tube	1
6-15	Valve sleeve	1
6-16	O-ring	1
6-17	Ball	1
6-18	Screw	1
*6-19	O-ring	1
6-20	Shaft	1
*6-21	O-ring	2
6-22	Nut	1
6-23	Handle wheel	1

#: Optional accessories

*: Wearing parts