

Pro**Meister**



User Guide

**Air Operated Waste Oil Drainer with
1/4" Quick Plug**

⚠ CAUTION

WARNING!

Read carefully and understand all INSTRUCTIONS before operating. Failure to follow the safety rules and other basic safety precautions may result in serious personal injury. Save these instructions in a safe place and on hand so that they can be read when required. Keep these instructions to assist in future servicing.

SAFETY PRECAUTIONS

General Safety Rules

WARNING: Read and understand all instructions.

WARNING: The warnings, cautions, and instructions discussed in this instruction manual cannot cover all possible conditions or situations that could occur. It must be understood by the operator that common sense and caution are factors which cannot be built into this product, but must be supplied by the operator.

WARNING!

- Do not extract caustic or flammable products
- Do not expose the reservoir to any source of heat
- While extracting high temperature oils, keep hands and face protected
- Only use the device for the purpose for which it has been designed
- Do not modify any component of the equipment
- Only use original spare parts
- Our technical office is at your full disposal for any information you may need

Product Specifications

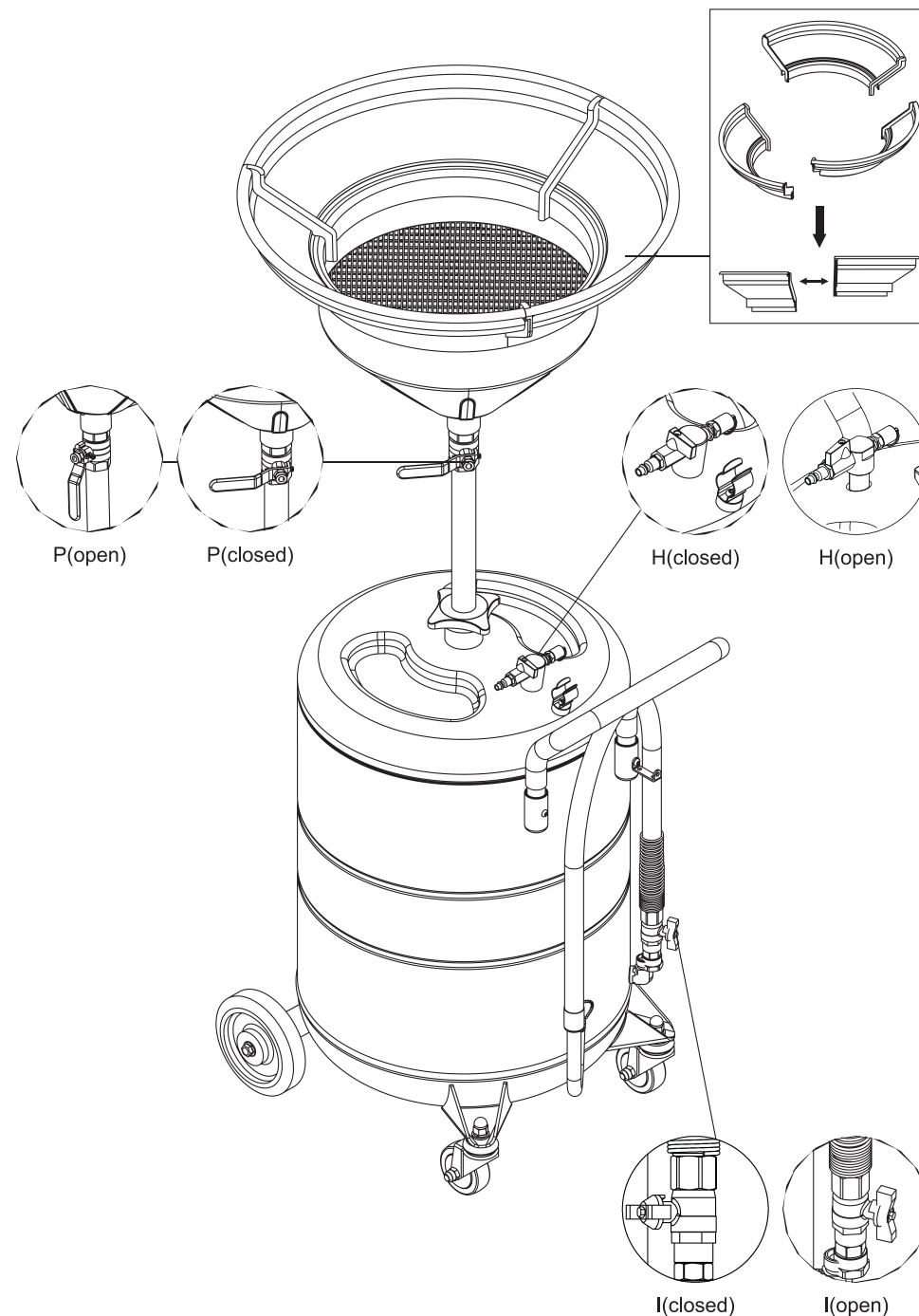
Art. No:	PT5529
Air Inlet:	1/4" Quick Plug
Extension Funnel:	Yes
Capacity:	70L/18.4Gal

- Max draining pressure: 1 bar/14.5psi
- Draining hose length: 1600mm/63"
- Collection bowl capacity: 18L/4.8Gal
- Extension funnel diameter: 606mm/23.8"

CAUTION!

- Never fill the reservoir over the maximum level indicated by the gauge that is located on the side of the reservoir.
- Don't exceed maximum pressure 1bar/14.5psi for draining.
- Open the bottom nut of the reservoir termly and clean out any dirty to avoid jam.

Product Assembly



Product Assembly

Fig 1: Insert the tube(N) into the reservoir, then turn the handwheel(O) clockwise direction and tighten.

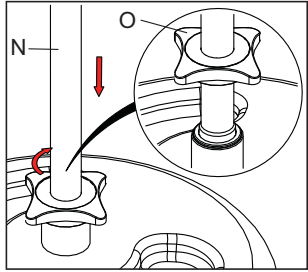


Fig 2: Assemble the handle(B) and the air inlet fitting, turn off the ball valve(H).

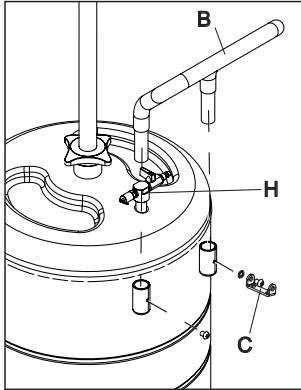
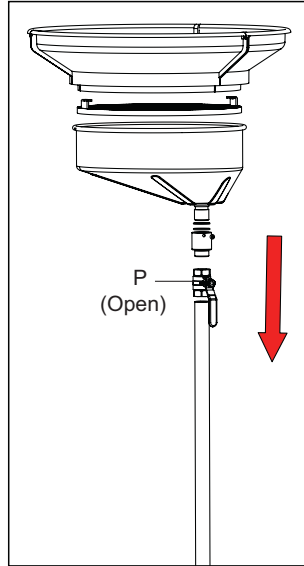


Fig 3: Assemble the rotor tube, ball valve (P), collecting bowl, filtrating plate and extension funnel orderly.



Product Operation

1. COLLECTING

Fig 4: Close all of the valves. Turn on the valve(H) and the valve(P).

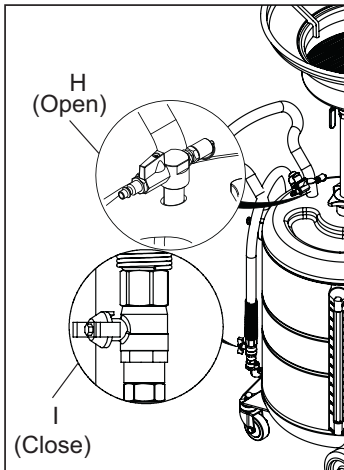
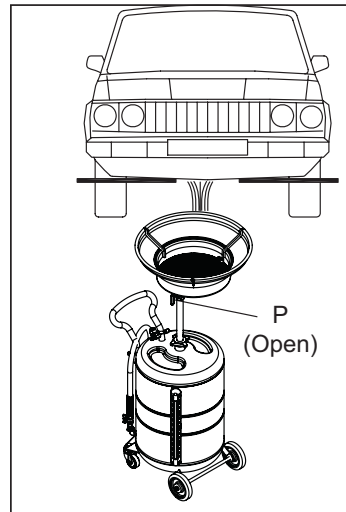


Fig 5: Place the oil drainer under the car to collect the waste oil.



Product Operation

2. DRAINING

Fig 6: Close all of the valves, put the spout (M) into the waste oil tank, then open the valve(I).

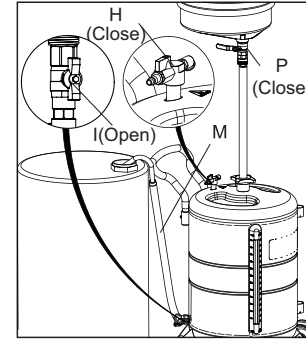


Fig 7: Connect the air supply.

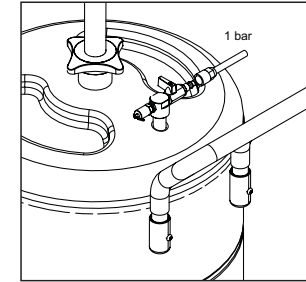
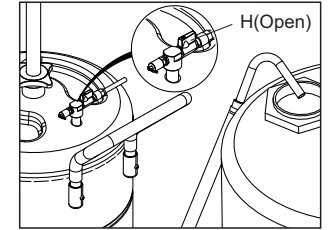


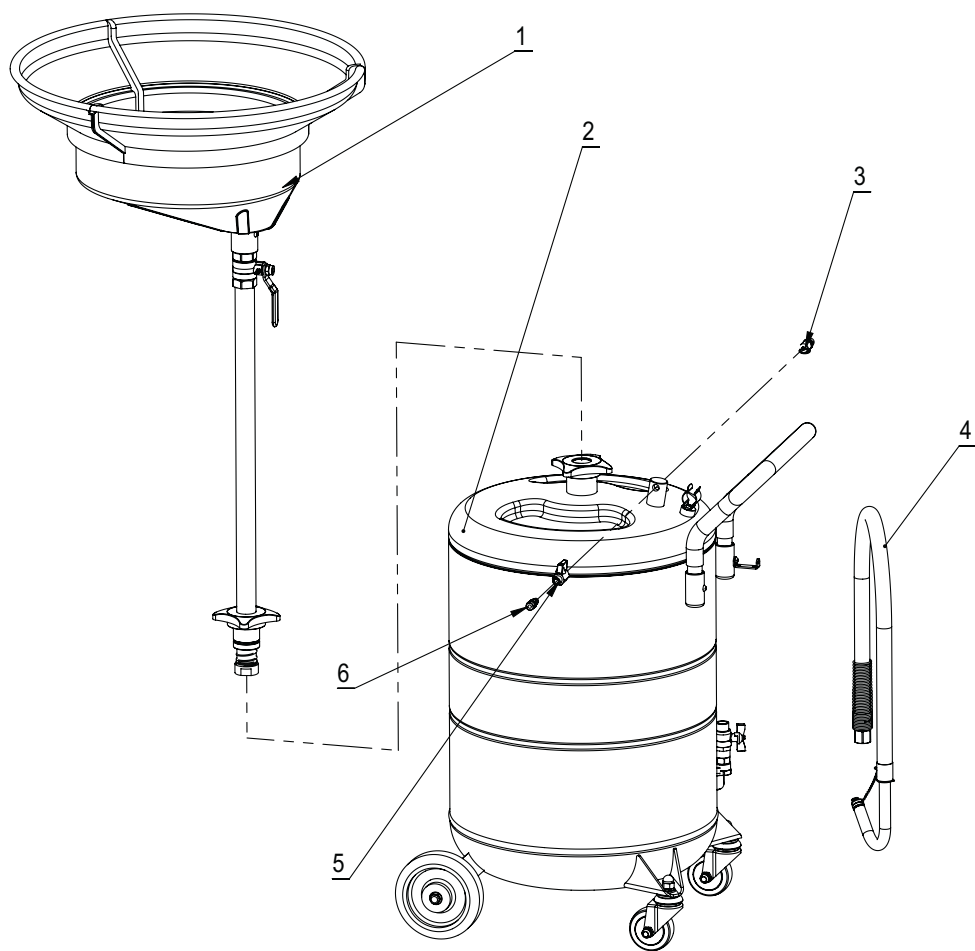
Fig 8: Open the valve(H) for draining.



LIMITED WARRANTY

- The manufacturer warrants this product against defects in material and craftsmanship, for a period of one year from date of purchase, but not including wearing parts.
- Manufacturer's liability is limited to replacement or repair of defective material within the warranty period.
- The warranty does not cover damage caused by accident, misuse or faulty installation.
- The product must be installed and maintained in compliance with the instructions.

Exploded & Part List

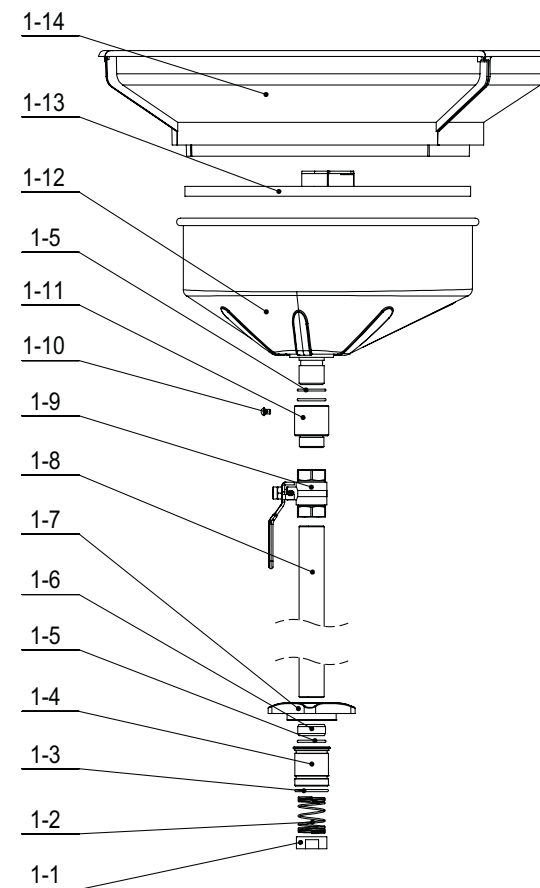


Part No.	Description	Qty
1	Oil collecting bowl assembly	1
2	Reservoir	1
3	Safety valve	1
*4	Discharging hose assembly	1
*5	Ball valve	1
*6	Quick plug	1

#: Optional accessories

*: Wearing parts

Oil Collecting Bowl Assembly & Part List



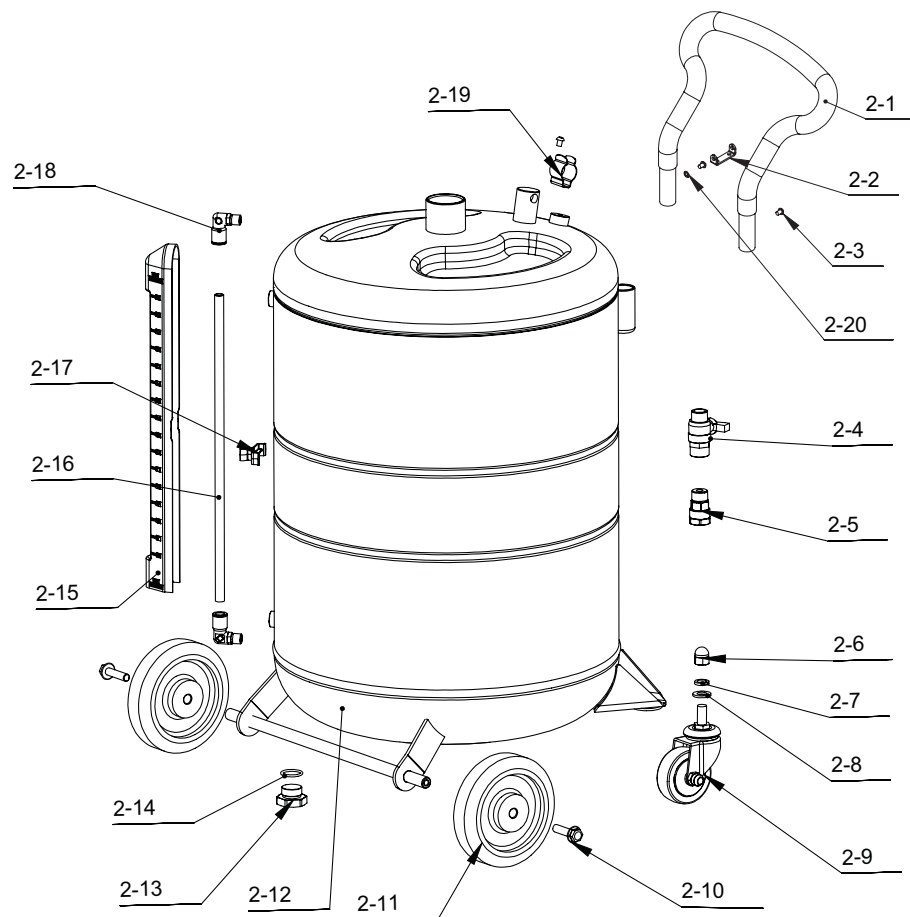
Part No.	Description	Qty
1-1	Check nut	1
1-2	Compression spring	1
*1-3	O-ring	2
1-4	Sealing brush	1
*1-5	O-ring	4
1-6	Expansion cover	1
1-7	Handwheel	1

Part No.	Description	Qty
1-8	Supporting tube	1
*1-9	Ball valve	1
1-10	Nut	1
1-11	Retainer sleeve	1
1-12	Oil collecting bowl	1
1-13	Filtrating plank	1
#1-14	Extension funnel	1

#: Optional accessories

*: Wearing parts

Reservoir & Part List



Part No.	Description	Qty
2-1	Handle	1
2-2	U-type hook	1
2-3	Screw	3
*2-4	Butterfly valve	1
*2-5	Swivel fitting	1
*2-6	Nuts	2
*2-7	Spring washer	2
2-8	Gasket	2
*2-9	Caster	2
2-10	Bolts	2

Part No.	Description	Qty
*2-11	Wheel	2
2-12	Reservoir assembly	1
2-13	Bolt	1
2-14	O-ring	1
2-15	Scale cover	1
2-16	Scale tube	1
2-17	Bushing	1
2-18	90° connector	2
2-19	Clip	1
2-20	Gasket	1

#: Optional accessories

*: Wearing parts

EC Declaration of Conformity

We,

Bileko Car Parts AB
P.O. Box 542,
S-645 23 Strängnäs,
Sweden

Herewith declare that the following machine complies with the appropriate basic safety and health requirements of the EC Directive based on its design and type, as brought into circulation by us.

In case of alteration of the machine, not agreed upon by us, this declaration will lose its validity.

Description: Air Operated Waste Oil Drainer with 1/4" Quick Plug

Type: Art nr: PT5229

Applicable EC Directives: EC Machinery Safety Directives (2006/42/EC)

Applicable Harmonized Standards: ISO 12100 (Risk Assessment & Risk Reduction)
ISO 11148-6 (Safety Requirements)
ISO 15744 (Noise Level)

Date / Authorized Signature:

2019-11-29

Title of Signatory:

Henrik Pettersson
Purchasing & Category Manager



