

Pro**Meister**



# User Guide

## Hose Reel with BSP Connectors

## Technical Details

Spring driven drum: for automatic retractable.

Locking ratchet: to maintain the desired length of hose in use.

Item	Max Pressure (psi/bar)	Hose Capacity				Inlet/Outlet	Remarks
		Material	Work Term. (°C)	I.D. (inch/mm)	Length (m/ft)		
PT6905	300	Hybrid Polymer	-40°C~+60°C -40°F~+140°F	3/8* /10	15/50	1/4"NPT or 3/8"BSPT	Stop at any point Slow Retraction

## ⚠ Safety Precautions

### GENERAL SAFETY RULES

**WARNING:** Read and understand all instructions.

**WARNING:** The warnings, cautions, and instructions discussed in this instruction manual cannot cover all possible conditions or situations that could occur. It must be understood by the operator that common sense and caution are factors which cannot be built into this product, but must be supplied by the operator.

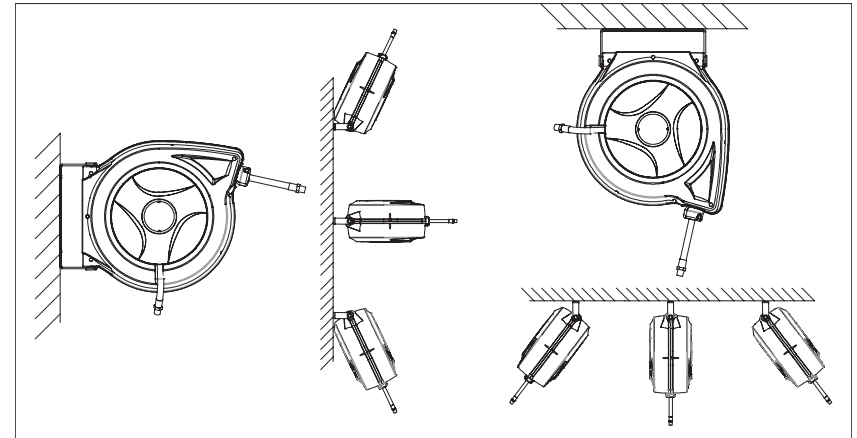
### Hose Reel Safety Precautions

1. Use proper eye protection when assembling and using the hose reel.
2. Keep children away from the work area.
3. Personal injury and/or equipment damage may result if proper safety precautions are not observed.
4. Ensure that reel is properly installed before connecting input and output hoses.
5. Bleed fluid/gas pressure from system before servicing reel.
6. Before connecting reel to supply line ensure that pressure does not exceed maximum working pressure rating of reel.
7. Remember, even low pressure is very dangerous and can cause personal injury or death.
8. If a leak occurs in the hose or reel, remove system pressure immediately.
9. Ensure that reel, hose, and equipment being service are properly grounded.
10. If reel ceases to unwind or rewind, remove system pressure immediately.
11. Do not pull or jerk on hose.

## Operation

1. Check reel for correct operation by slowly pulling out the hose.
2. To latch the reel, slowly pull out the hose to any point, Relax the hose to stop.  
Note: it can not exceed the back end mark When the hose is pulled out,
3. To unlatch the reel, slowly pull the hose after relax, and then let the hose retract until the hose stop rests against the hose guide. Note: To avoid damage to the reel, always hold on to the hose while it is rewinding.
4. Periodically check the hose condition for wear or damage, and check the swivel fitting for leakage. Replace any worn, damaged, or leaking parts.

## Installation



You will need to purchase appropriate hardware for mounting your new reel.

1. For mounting: For air series, Install reel on the wall and ceiling at most 9feet / 3m above the floor. For water series, Install reel on the wall at most 4.5feet / 1.5m above the floor.
2. The reel base has two mounting holes for mounting on a suitable flat surface for air series (four mounting holes for water series). Below figures is a template showing the correct location of the mounting holes in the base.
3. Using the mounting holes in the base, mount the reel in the desired location. Be sure to use appropriate hardware and tighten securely.
4. The end of incoming hose can be connected to desired supply source.
5. Outlet fittings on reel hose attach to desired tool, or nozzle. Check connection for leakage, also check hose reel for correct operation. See: Operation section.
6. If hose stopper adjustment is required, pull hose from reel and allow to latch at desired length. Loosen stopper bolts, and slide stopper to a position close to the hose guide. Tighten stopper bolts, and unlatch the reel.

## Maintenance

Make sure the hose is in proper working order.

Clean the hose with a cloth dipped in warm water to remove dirt or deposits and ensure correct rewinding.

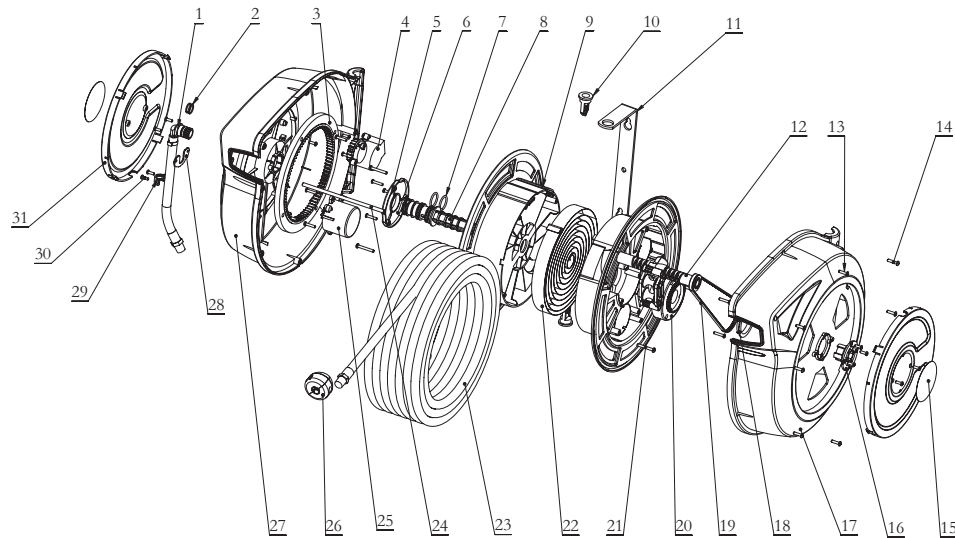
Do not use detergents or solvents which could prove incompatible with cable-winder materials.

Dismantling of the unit by unskilled personal could prove hazardous; the risk involved mainly concern the preloaded springs.

## Limited Warranty

1. The manufacturer warranties this hose reel against defects in material and craftsmanship, for a period of 24 months from date of purchase, but not including hose and O-ring parts.
2. Manufacturer's liability is limited to replacement or repair of defective material within the warranty period, when returned freight prepaid to the distributor or their designated service depot.
3. The warranty does not cover damage caused by accident, misuse or faulty installation.
4. The reel must be installed and maintained in compliance with the instructions.

## Explore and Parts List



Part No.	Description	Qty
1	Hose assembly	1
2	O-ring	2
3	Gear	1
4	Stop at any point	1
5	Screws	1
6	Support cover	6
7	O-ring	2
8	Spool	1
9	Drum	2
10	Fixed pin	2
11	Base	1
12	Hose compositor assembly	1
13	Screws	8
14	Screws	18
15	Label	2
16	Pre-tightening cover	1

Part No.	Description	Qty
17	Right casing	1
18	Baffle	1
19	Synchronous belt	1
20	Synchronous wheel	1
21	Screws	4
22	Spring	1
23	Hose Assembly	1
24	Guide bar	1
25	Slow reaction assembly	1
26	Bumper block assembly	1
27	Left shell	1
28	Fixed film	1
29	Hose clamp	1
30	Screws	2
31	Side cover	2

## EC Declaration of Conformity

We,

Bileko Car Parts AB  
P.O. Box 542,  
S-645 25 Strängnäs,  
Sweden

Herewith declare that the following machine complies with the appropriate basic safety and health requirements of the EC Directive based on its design and type, as brought into circulation by us.

In case of alteration of the machine, not agreed upon by us, this declaration will lose its validity:

Description: Hose Reel with BSP Connectors

Type: Art nr: PT6905

Applicable EC Directives: EC Machinery Safety Directives (2006/42/EC)

Applicable Harmonized Standards: ISO 12100 (Risk Assessment & Risk Reduction)  
ISO 11148-6 (Safety Requirements)  
ISO 15744 (Noise Level)

Date / Authorized Signature:

2019-11-29 

Title of Signatory:

Henrik Pettersson  
Purchasing & Category Manager



