

EC Declaration of Conformity

We, **Bileko Car Parts AB**
P.O. Box 542,
S-645 25 Strängnäs,
Sweden

Herewith declare that the following machine complies with the appropriate basic safety and health requirements of the EC Directive based on its design and type, as brought into circulation by us.

In case of alteration of the machine, not agreed upon by us, this declaration will lose its validity.

Description: Cable Reel with Swedish Plug and Socket
Type: Art nr: PT7805
Applicable EC Directives: EC Machinery Safety Directives (2006/42/EC)
Applicable Harmonized Standards: ISO 12100 (Risk Assessment & Risk Reduction)
ISO 11148-6 (Safety Requirements)
ISO 15744 (Noise Level)

Date / Authorized Signature:

2019-11-29



Title of Signatory:

Henrik Pettersson
Purchasing & Category Manager



Pro**Meister**



User Guide

Cable Reel with Swedish Plug and Socket

General Safety Regulations



WARNING: The warnings, cautions, and instructions discussed in this instruction manual cannot cover all possible conditions or situations that could occur. It must be understood by the operator that common sense and caution are factors that cannot be built into this product, but must be supplied by the operator.

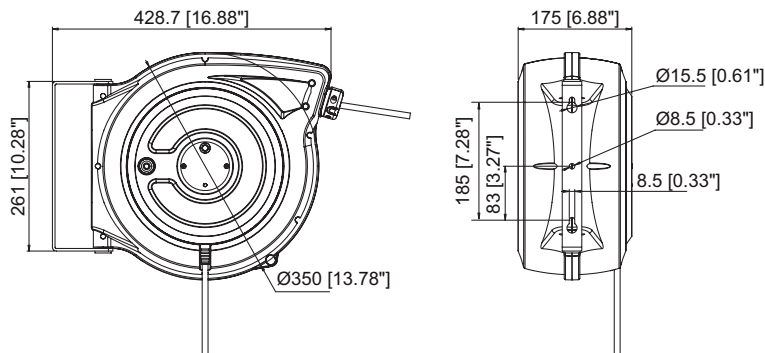
1. Keep the work area clean and dry. Damp or wet work areas can result in injury.
2. Keep children away from work area. Do not allow children to handle this product.
3. Use the right tool for the job. Do not attempt to force small equipment to do the work of larger industrial equipment. There are certain applications for which this equipment was designed. It will do the job better and more safely at the capacity for which it was intended. Do not modify this equipment, and do not use this equipment for a purpose for which it was not intended.
4. Check for damaged parts. Before using this product, carefully check that it will operate properly and perform its intended function. Check for damaged parts and any other conditions that may affect the operation of this product. Replace damaged or worn parts immediately.
5. Do not overreach. Keep proper footing and balance at all times to prevent tripping, falling, back injury, etc.
6. DO NOT use the equipment when tired or under the influence of drugs, alcohol, or medication. A moment of inattention while operating this equipment may result in serious personal injury.

Your risk from these exposures varies, depending on how often you do this type of work. To reduce your exposure to these chemicals: work in a well ventilated area, and work with approved safety equipment, such as those dust masks that are specially designed to filter out microscopic particles.

Technical Details

Item No.	Cable Specification					Volt (V)	Wound Watts	Unwound Watts
	Sectional Area (mm ²)	Number of Core	Plug Socket	Type	Length (ft)			
PT7805	1.5	3	Sweden	H07RN-F	15	230	1000	2000

NOTE: Product standard color: red crust and black cover



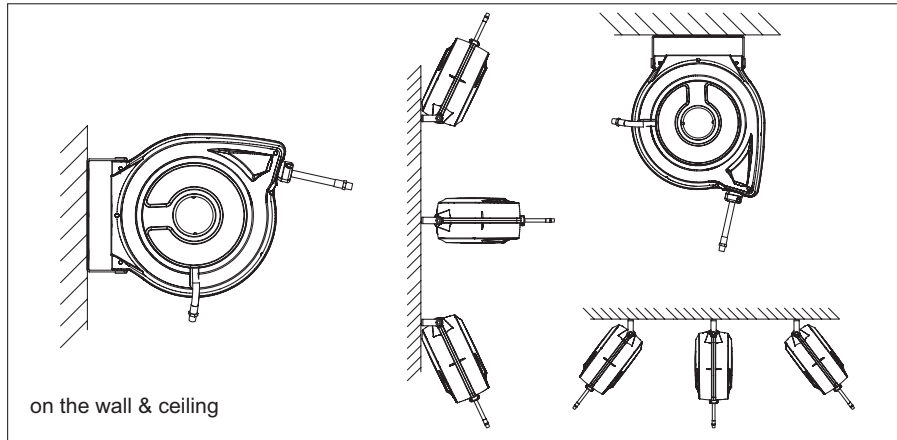
Safety Precautions

⚠ WARNING

1. Read carefully and understand all INSTRUCTIONS before operating. Failure to follow the safety rules and other basic safety precautions may result in serious personal injury.
2. Save these instructions in a safe place and on hand so that they can be read when required. Keep these instructions to assist in future servicing.
3. The warnings, cautions, and instructions discussed in this instruction manual cannot cover all possible conditions or situations that could occur. It must be understood by the operator that common sense and caution are factors which cannot be built into this product, but must be supplied by the operator.
4. Exposure of skin directly to pressurized air, or fluids could result in severe bodily injury.
5. Ensure that only the qualified electrician can install/services this cable reel. And it must not be used by children or unskilled persons.
6. Ensure that power supply voltage does not exceed maximum voltage rating of reel.
7. Ensure that reel is properly be installed before connecting to power supply.
8. Ensure that all electrical power is removed from reel before servicing.
9. Check for frayed and broken wires before each use.
10. When pull electrical cable from the reel always grasp the electrical cable itself, not the work device.
11. Remove power from the reel immediately when any malfunction occurs.
12. Never remove, tamper with or cut the safety devices fitted by the manufacture.
13. Do not use the reel in damp or wet conditions. Keep the work area is clean. Avoid put in sundries reel.

Installation

1. Unpack and inspect reel for damage. Turn by hand to check for smooth operation. Check for completeness.
2. The cable reel must be installed in premises conforming to current regulation and standards covering systems and work environments.
3. Secure the cable reel to the wall and the ceiling according to the installation diagrams. Using screw anchors or suitable screws which must be fitted in the holes in the brackets.
4. Adjust the cable stopper to the suitable position when required.



Operation

1. Check reel for correct operation by slowly pulling out the cable.
2. To latch the reel, slowly pull out the cable to any point, Relax the cable to stop.
Note: it can not exceed the back end mark When the cable is pulled out.
3. To unlatch the reel, slowly pull the hose after relax, and then let the cable retract until the cable stop rests against the cable guide.
4. When over loading, the thermal cut-out will cut off automatically, then push the red button until restore. Note: To avoid damage to the reel, always hold on to the cable while it is rewinding.

Maintenance

1. Make sure the Cord is in proper working order.
2. Clean the Cord with a cloth dipped in warm water to remove dirt or deposits and ensure correct rewinding.
3. Do not use detergents or solvents which could prove incompatible with cable-winder materials.
4. Dismantling of the unit by unskilled personal could prove hazardous; the risk involved mainly concern the preloaded springs.

Limited Warranty

1. The manufacturer warrants this Cord reel against defects in material and craftsmanship, for a period of 12 months from date of purchase.
2. Manufacturer's liability is limited to replacement or repair of defective material within the warranty period, when returned freight prepaid to the distributor or their designated service depot.
3. The warranty does not cover damage caused by accident, misuse or faulty installation.
4. The reel must be installed and maintained in compliance with the instructions.

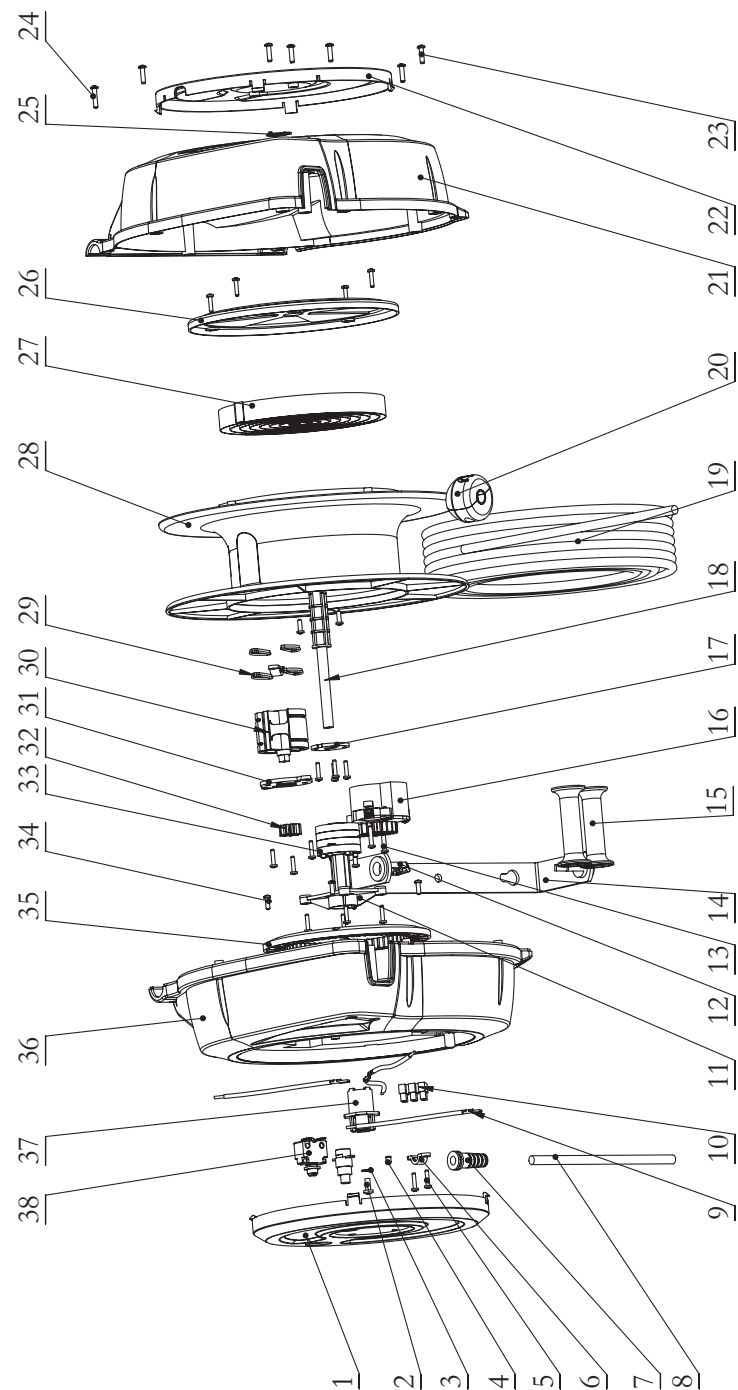
Troubleshooting

Failure: The cable can't be Conduction

Possible cause: Overload or overheat protection

Corrective Action: Press the red button on the side cover

Exploded & Part List



Exploded & Part List

Part No.	Description	Qty
1	Left side cover	1
2	Screws M5x12	1
3	Washer	1
4	Indicator light	1
5	Screws ST3.5x16	19
6	Cable Clamp	2
7	Cable protective sleeve	1
8	Import cable	1
9	Wireway	4
10	Connector	1
11	Support plate	1
12	Fixed pin	2
13	Screws PT4.0x20	3
14	Base	1
15	Roller	2
16	Stop at any point assembly	1
17	Baffle	1
18	Supporting shaft	1
19	Cable	1

Part No.	Description	Qty
20	Stop block assembly	1
21	Right shell	1
22	Right side cover	1
23	Screws PT4.5x16	7
24	Screws ST4.2x22	2
25	Shaft ring	1
26	Spring cover	1
27	Spring	1
28	Drum	1
29	O-ring	4
30	Buffer	1
31	Cover	1
32	Gear	1
33	Slip ring	1
34	Screws PT4.0x12	6
35	Gear	1
36	Left shell	1
37	Support sleeve	1
38	Thermostat	1